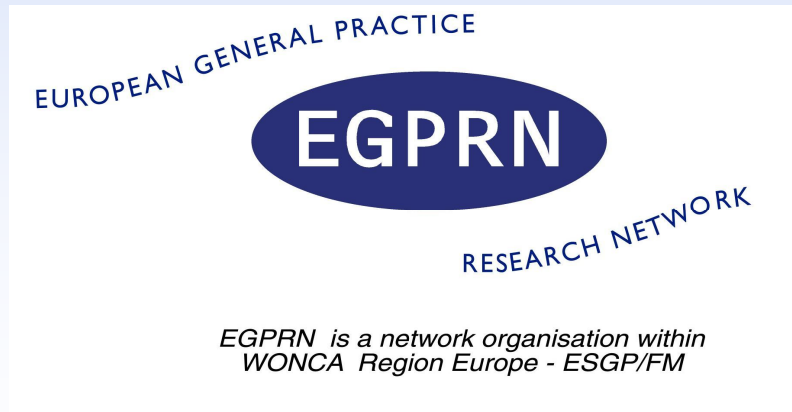


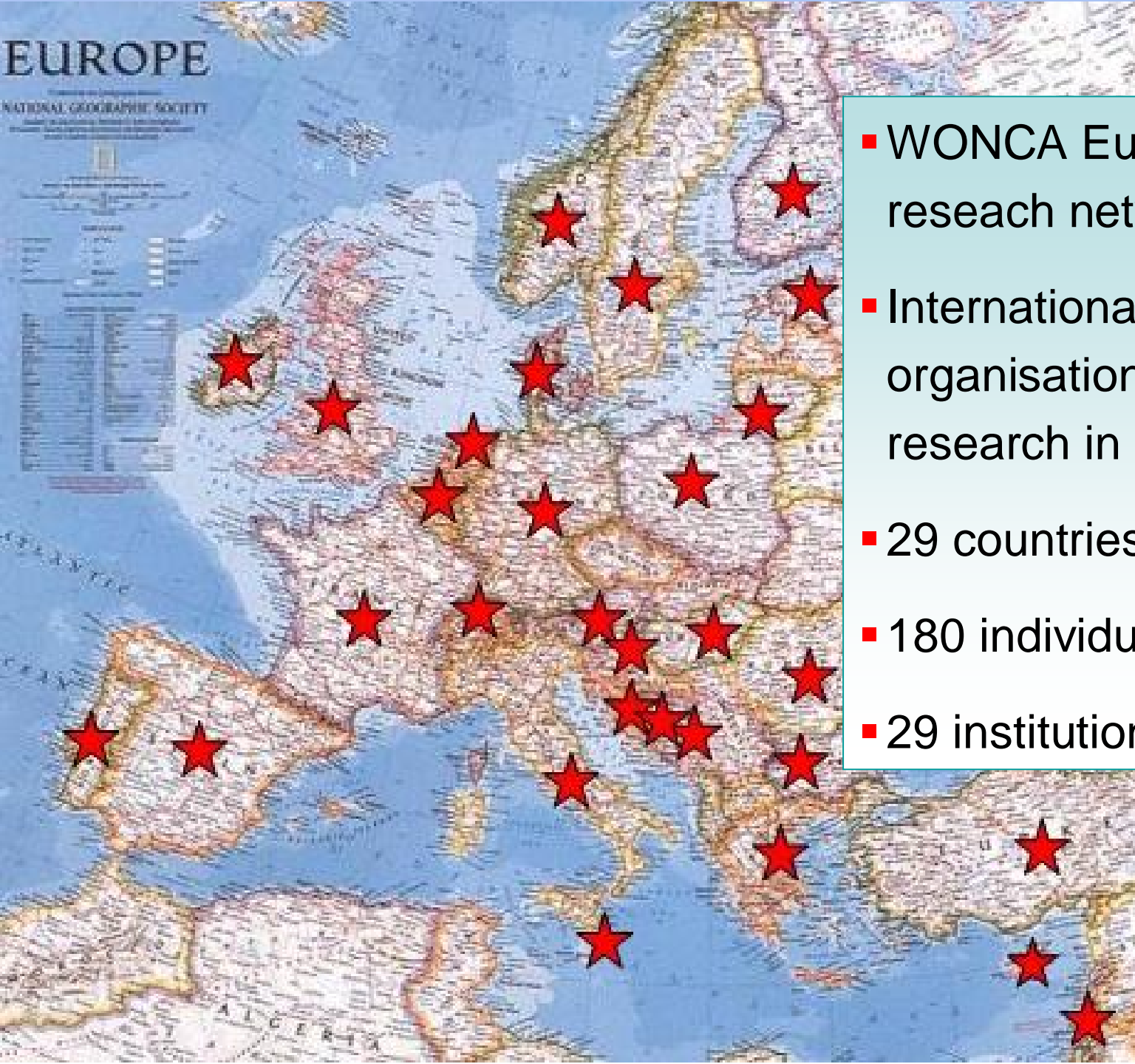
European General Practice Research Network

Jean Karl Soler



EUROPE

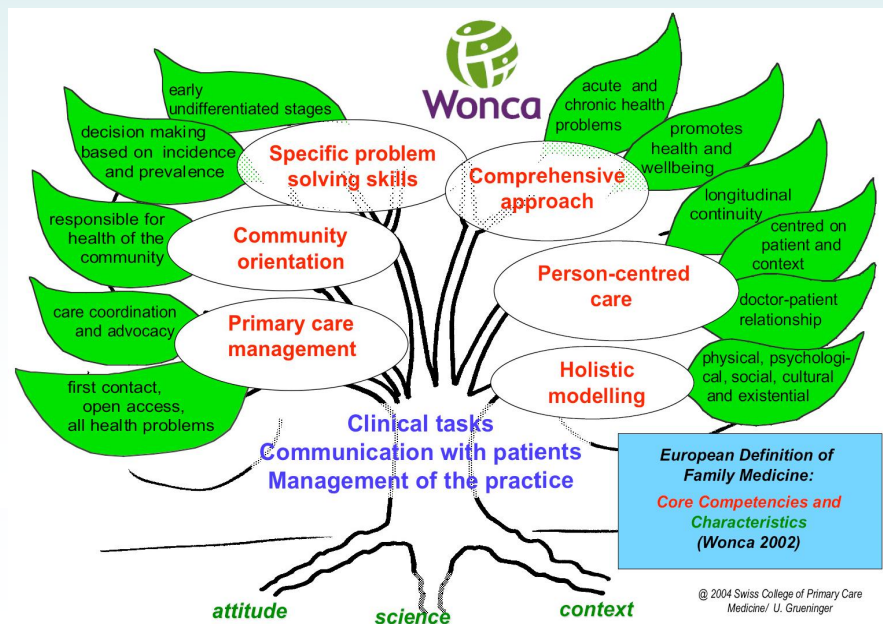
NATIONAL GEOGRAPHIC SOCIETY



- WONCA Europe's research network
- International organisation for GP/FM research in Europe
- 29 countries (+)
- 180 individual members
- 29 institutional members

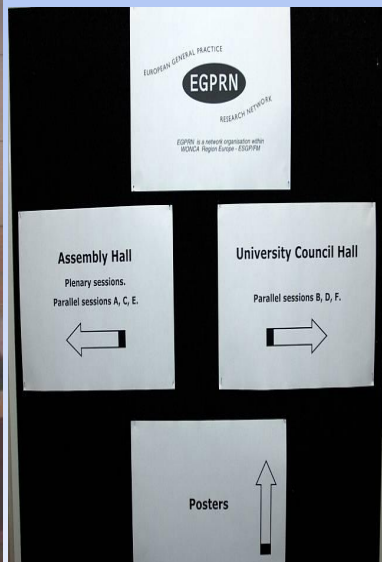
Need for PC Research

- Most care is delivered at primary level
- Need for research in the setting where results are to be used
- Providing evidence for improved quality of care
- Acute care and care, chronic disease care, diagnosis and therapy without inappropriate intervention
- Characteristics of family medicine



- Secretariat: Hanny Prick, Maastricht
- Executive Board (8)
- Council of national representatives (29)
elected by national members
- Committees
 - **Educational Cee**: research courses, feed-back, mentoring
 - **Research Cee**: research agenda, collaborative research, funds
 - **Communication Cee**: website, EGPRN News, ...

- Each May & October
- **Pre-conference workshops**
- **Business meetings**
- 2-day **scientific conference**
 - *Key-note speakers*
 - *Oral presentations*
 - *One slide five minutes-presentations*
 - *Guided poster sessions*
 - *Individual feedback*
- **Networking with workshop style** (work in progress)
 - **focus on discussion and feedback**



Research courses

- Formulate research questions
- Critical readings skills
- Research methods
- Presentation and writing skills



Small groups, hands-on experience, informal access

→ Course templates and materials for organisers

Family Practice Advance Access published April 27, 2010

Family Practice 2010; 0:1–9
doi:10.1093/fampra/cm9023

© The Author 2010. Published by Oxford University Press. All rights reserved.
For permissions, please e-mail: journals.permissions@oxfordjournals.org.

Themes and methods of research presented at European General Practice Research Network conferences

Carsten Kruschinski^{a,*}, Maaïke Lange^{a,b}, Christos Lionis^c,
Chris van Weel^b, Eva Hummers-Pradier^a and EGPRN^d

Family Practice Vol. 21, No. 5 © Oxford University Press 2004, all rights reserved.
Doi: 10.1093/fampra/cm9518, available online at www.fampra.oupjournals.org

Printed in Great Britain

Setting priorities and identifying barriers for general practice research in Europe. Results from an EGPRW* meeting

C Lionis^a, HEJH Stoffers^b, E Hummers-Pradier^c, F Griffiths^d,
D Rotar-Pavlič^e and JJ Rethans^f

Lionis C, Stoffers HEJH^b, Hummers-Pradier E, Griffiths F, Rotar-Pavlič D and Rethans JJ. Setting priorities and identifying barriers for general practice research in Europe. Results from an EGPRW meeting. *Family Practice* 2004; **21**: 587–593.

- Evidence base of the European definition
- Research needs and evidence gaps
- Improving GP research in low capacity countries



Eva Hummers-Pradier, Martin B
Christos Lionis, Lieve Peremans,
Pinar Topsever, Mehmet Ungan,

REDE EUROPEIA DE INVESTIGAÇÃO

EGPRN

EM CLÍNICA GERAL

A EGPRN é uma organização no seio da
WONCA Europa - ESGP/IFM

Eva Hummers-Pradier, Martin Beyer, Patrick Chevallier, Sophia Eilat-Tsanani,
Christos Lionis, Lieve Peremans, Davorina Petek, Imre Rurik, Jean Karl Soler, Henri E.J.H. Stoffers,
Pinar Topsever, Mehmet Ungan, Paul van Royen

Added value of EGPRN

- Learning environment for FP researchers
 - Platform to discuss and present
 - Sustainable network of friends
-
- ➔ Development of academic primary care
 - ➔ Capacity building
 - ➔ International competitiveness and mobility
 - ➔ Visibility of European research in GP/FM

www.egprn.org

New Executive Board - New decisions...

- Two meetings a year, with different focus
 - Workshops in conference on methodology
 - Sessions to work on simple research ideas
- New fees structure from June 2014
 - €200 membership fee for 3 years (€150 1 year)
 - €750 institutional membership for three years
 - €180 congress fee for members, €350 N/M (+€50)
- New initiative on EU collaborative projects
- Next meetings in Barcelona and Crete in 2014, Romania in May 2015
- New EJGP publication policy

- Educational Committee – Ferdinando Patrazzuoli
- Research Strategy Committee – Esperanza Diaz
- Communications Committee – Tiny van Merode
- Blue-dot Committee – Caroline Huas